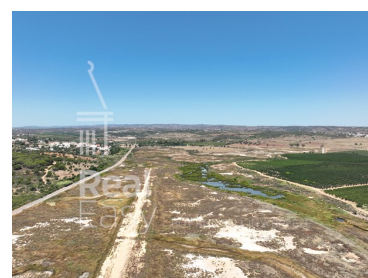




## Castro Marim - Land



**25060**  
Land Area (m²)

**1 500 000 €**  
(EUR €)

### Investment in Tourism related to Ultra-Light Vehicles

Welcome to the Eco Pista da Praia Verde (EPPV), an exceptional hub for various air operations nestled in the heart of the Castro Marim Marshland Reserve / VRSA, in the Eastern Algarve, Portugal. Facilities are an "airport infrastructure" dedicated to Ultra Light Aviation, equipped to support a wide range of activities, from private aviation and nature conservation tourism to firefighting, civil protection and medical emergencies.

ANAC (National Civil Aviation Authority) License No. 040 of 2018 (originally licensed in 1973), ensuring the highest standards of aviation safety and compliance.

A runway extending up to 730 meters long and 23 meters wide, suitable for various aircraft operations.

**T +351 910 797 869 <sup>2</sup> · T +351 910 797 869 <sup>2</sup> · E [easy@realeasy.pt](mailto:easy@realeasy.pt)**  
**Sítio dos Calços, Moncarapacho**  
**AMI 22285**

<sup>1</sup> (Call to national fixed network) | <sup>2</sup> (Call to national mobile network)



The track, identified as QNE 12/30, features a durable gravel and grass surface, blending seamlessly into the natural surroundings.

The facility spans an impressive 250,000 m<sup>2</sup>, providing ample space for a variety of aviation and ground activities.

Within this vast area lies a 74 m<sup>2</sup> ruin (extendable to 130 m<sup>2</sup>), a historic touchstone with potential for restoration or repurposing. Possibility of building a 500 m<sup>2</sup> hangar.

Authorized pergola of 150 m<sup>2</sup>, ideal for meetings, events or as a panoramic viewpoint for visitors.

Additionally, EPPV is poised to tap into the lucrative birdwatching market, providing an unparalleled experience for nature enthusiasts. This property has immense potential, capitalizing on the rich biodiversity and serene environment of the reserve.

EPPV is not just a facility; It is a gateway to experience the blend of aviation excellence and nature's splendor.

There are several business possibilities, please contact us for information and details. Direct call +351 910 797 869.

## Property Features

- Internet: Fibre
- Well
- Energetic certification: Exempt

**T +351 910 797 869 <sup>2</sup> · T +351 910 797 869 <sup>2</sup> · E [easy@realeasy.pt](mailto:easy@realeasy.pt)**

**Sítio dos Calços, Moncarapacho  
AMI 22285**

<sup>1</sup> (Call to national fixed network) | <sup>2</sup> (Call to national mobile network)